

ASL Digital Data Recorder

Raw data recorder for long hours for post processing requirements



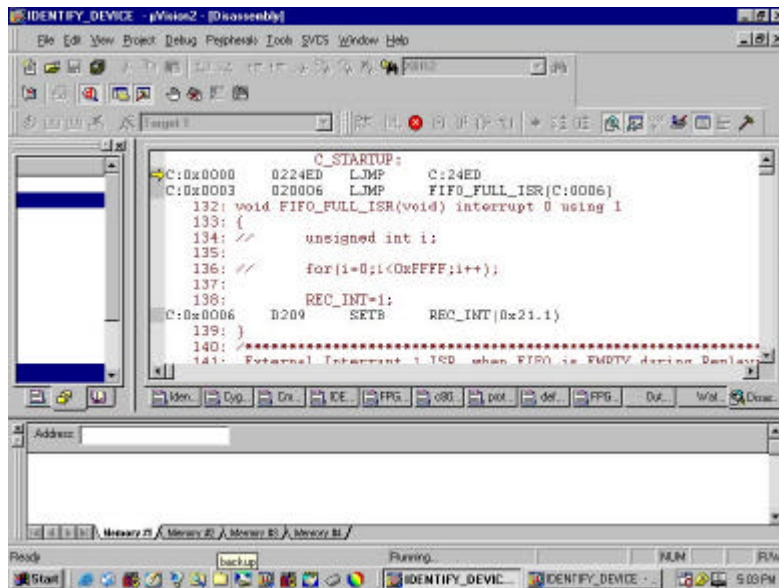
Digital Data Recorder

General Features

- No Operating System required
- 16 bit parallel data inputs
- Differential/ TTL inputs
- Data rate upto 1.5MHz
- Man machine interface for controlling record/replay.
- Stores data onto Hard disk(record)
- Reads the data stored on the hard disk(replay)
- 16bit parallel data output
- Status report of record/replay.
- Record speed of 2Mbytes/second
- Replay speed of 1.5Mbytes/second
- Portable enclosure
- 115Volts or 220Volt Power supply

Optional Features

- High data rate inputs
- Data compression
- Data encryption
- Different record media like Compact flash/tapes



Specifications

ASL Digital Data Recorder

ELECTRICAL AND ENVIRONMENTAL

Power	: 115/220 volts 50/60Hz
Input/Output	: differential/TTL inputs
Man-Machine Interface	: RS232(115200-N-8-1)
Operating temperature	: 0°C to +55°C
Storage temperature	: -20°C to +70°C
Humidity	: 95% RH at +40°C

MECHANICAL

Enclosure	: Ruggedised Aluminum alloy enclosure
Finish	: Powder Coated with matte finish to prevent rusting with Water splash proof design.
Overall Dimensions	: 150 x 45 x 97mm
Weight	: 450 grams approx

STORAGE

Storage Media	: 40 GB Hard disk
---------------	-------------------

Due to continuous product development ASL reserves the right to amend or alter the specifications without any prior notice

ASL

GEOPIINT 2301GC