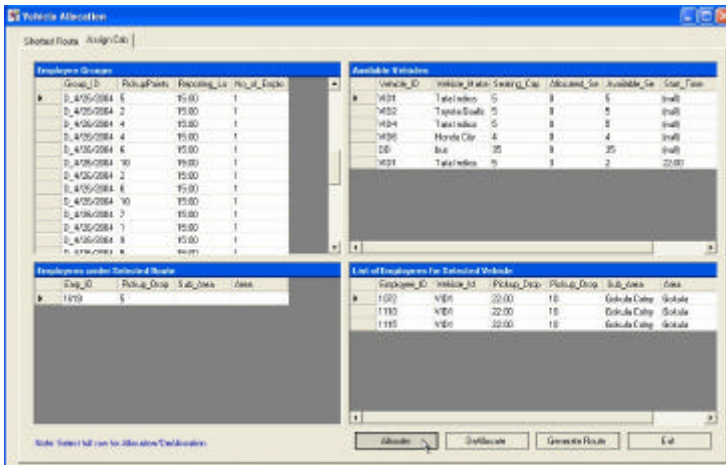


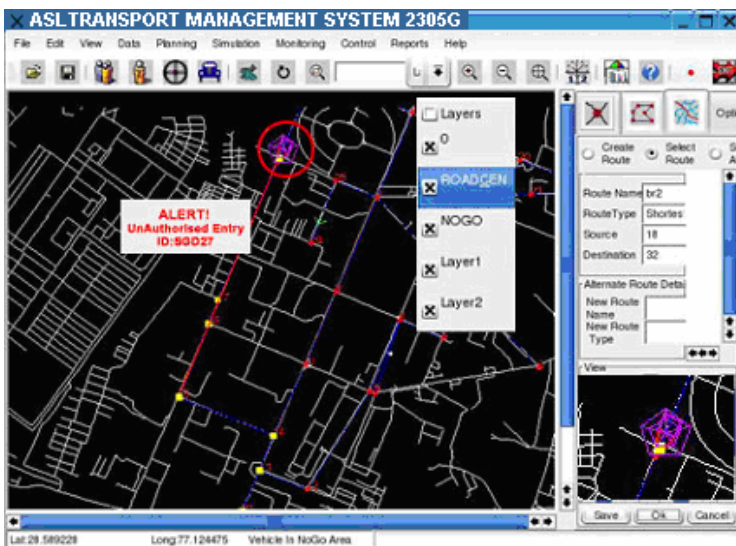
ASL GeoSolution 2305G

Transport Management

ASL GeoSolution 2305G is a planning, simulation and monitoring environment that combines geographic (map) information with data from GPS / Barcode / Proximity / RFID Sensors. With easy to use features, the tracker is ideal for mobile asset tracking applications such as vehicle tracking and fleet management.



Planning and Reports



Vehicle Tracking on MAP

General Features

GIS / HMI

- Import map data from MapInfo, Arc Info, AutoCAD via DXF.
- OpenGL based 2D / 3D Visualization.
- Layered map.
- Pan, Zoom, Rotate.
- Geo fencing: go/ no-go area.
- Waypoint / path creation on Network layer.

GPS / VTS

- Accepts GPS strings in different formats.
- Icon based vehicle tracking on map.
- Data / Journey logging.
- Vehicle monitoring via CAN bus.
- Speed alerts – over speed / under speed.
- Route planning.
- Vehicle allocation.
- Driver allocation.

Optional Features

- Interface to Barcode / Proximity / RFID.
- Image Processing.
- Hands free – Speech Enabled.

Applications

- Traffic Management.
- Fleet Management.
- Surface Movement Tracking.
- Coastal surveillance.
- Vessel Traffic.
- Aircraft Traffic.

ASL

AEROSPACE SYSTEMS PRIVATE LIMITED

"PRAGATHI", 70/1, MILLER ROAD
BANGALORE – 560 052, INDIA.

Tel : +91 (80) 2225 8376, 2225 6342

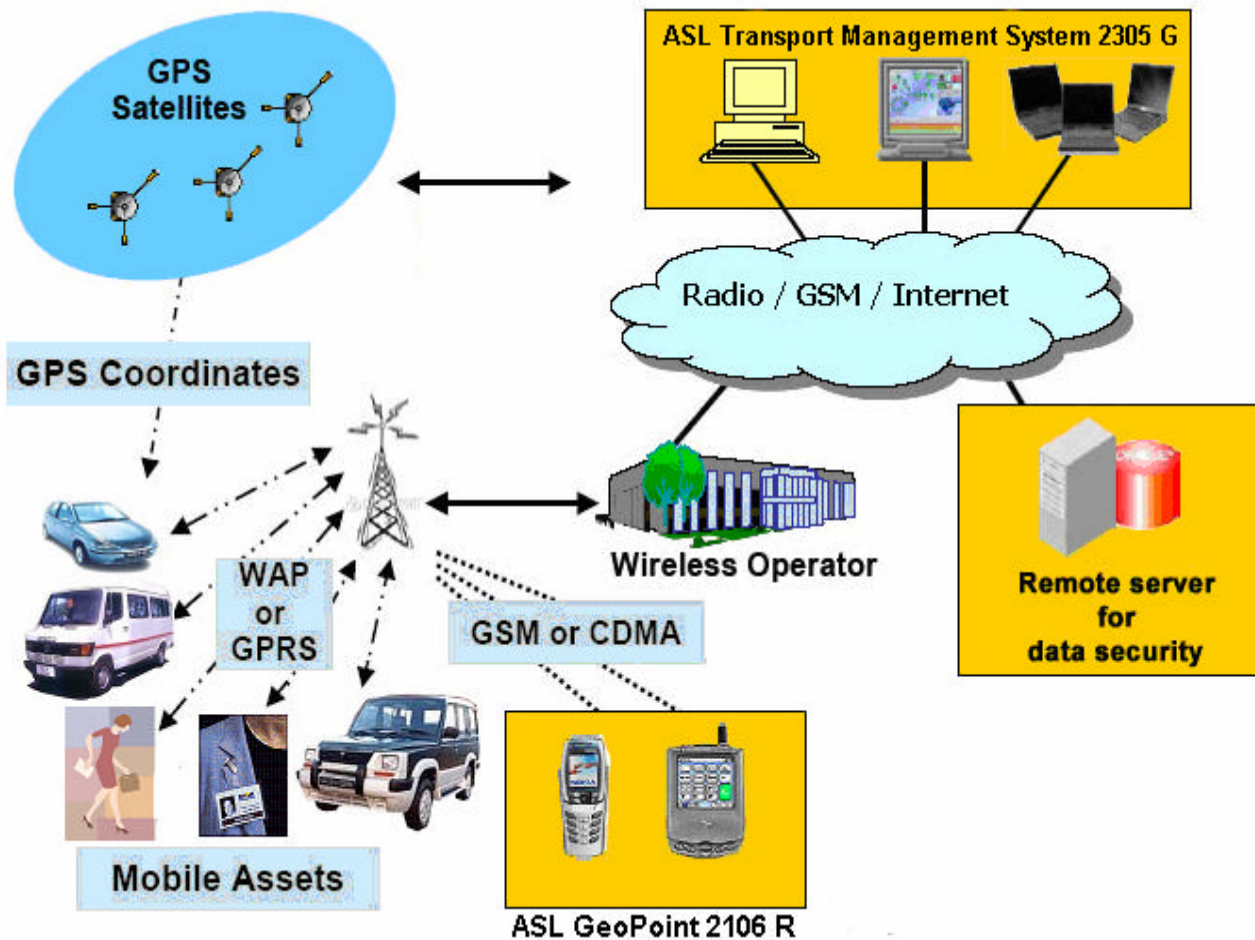
Fax : +91 (80) 2220 3350

Email : contact@asllabs.com

Website: www.asllabs.com

Application Scenario

ASL GeoSolution 2305G system helps organizations plan and monitor vehicle journeys by allocating vehicles, suggesting routes and monitoring the location of all vehicles, drivers and passengers in real time.



Typical System Requirements

- Hardware : PC, Pentium IV, 2.6GHz, 256MB RAM, 40GB HDD
- OS : Windows 98, NT, 2000 and above, XP,
Linux (Redhat / Mandrake / SUSE), X Windows
- Database : MS Access, MS SQL, Postgres SQL