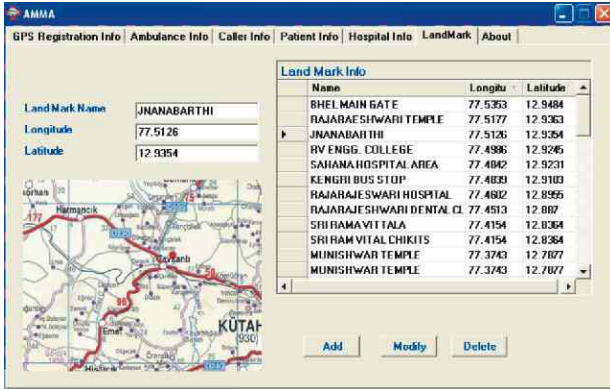
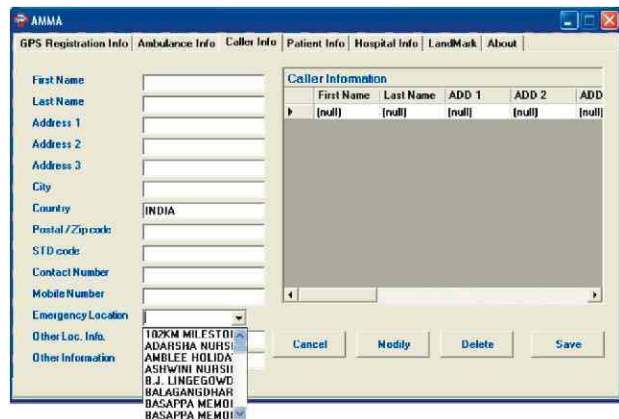
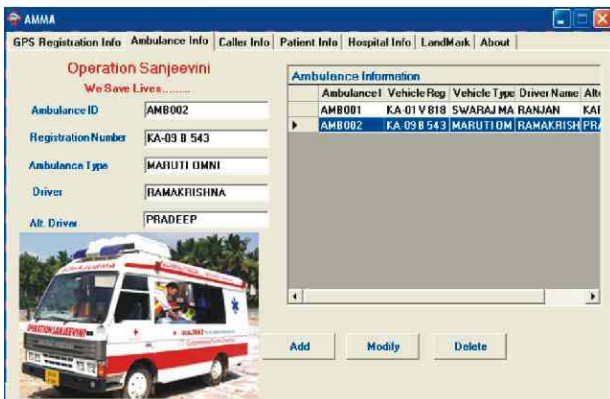


Ambulance Monitoring & Maintenance Application (AMMA)

The ASL AMMA is an health care application software, and is designed for use by the Ambulances belonging to the Hospitals or other Health Care Service Providers which are deployed to provide pre-hospital care to accident and emergency victims in an inter-city or intra-city operations.



In its operation, AMMA makes the combined use of Geographic map information of the area along with the live position data from GPS based vehicle tracking unit installed in the Ambulance, and presents the same on a client's site control station. The control station is equipped with a DeskTop Computer and a modem corresponding to the particular Radio used for communication between Ambulance and the Control Station. A communication software installed on the DeskTop Computer enables to view the data output GPS strings from the vehicle tracking unit received through the Radio on the geographic map displayed on its screen, and thus enables to effectively monitor, dispatch and track the Ambulance(s).



FEATURES

AMMA offers several user-friendly features, including patient information, caller information, hospital name, ambulance registration, route and land marks on the map.

AMMA, as an end-to-end solution comprises of:

- Vehicle Tracking Unit (ASL 2407R)
- Communication Software (ASL GeoConnect)
- Application Software (ASL AMMA)
- Control Station (Desk Top PC and Radio Modem)
- Third Party items

Ambulance Monitoring & Maintenance Application (AMMA)

ASL GeoPoint 2407R - A robust mobile and compact unit

- Uses state-of the art 16 channel GPS receiver with advanced electronics and embedded software
- Outputs data strings Lat, Long, Velocity, Direction, Distance Traveled, Time, Date
- Contains NV Flash memory enabling to log 100,000 data strings for upto 240 days
- Operates in Data Call (Polling), SMS or GPRS modes
- Status indicators
- Optional : GeoPoint 2407G (GSM based unit)
- Optional : GeoPoint 2407G (CDMA based unit)

ASL GeoConnect - A GUI based communication software, using which the Control Station operator can query any vehicle unit and obtain its position and related data in real time, or send message to the unit (equipped with display/keyboard). The vehicle unit can also be configured to report its position data to the Control Station at set intervals, and update the database of the vehicle which can be read and the position displayed on the screen.

ASLAMMA - General Features

- Maintains Ambulance, Patient, Hospital and Caller information
- Secures vehicle ID using its registration in GPS data
- Accepts GPS data strings
- Icon-based vehicle tracking on a map
- Map has a provision to add new land marks for new routes
- Adds patient information with casualty details, time of accident, hospital admitted to, pick-up ambulance etc.
- Enables to locate casualty location on the map and nearest available Ambulance
- Alerts on over-speeding, long stoppage etc.
- Optional : works with GSM/CDMA equipped Vehicle tracking unit also

Control Station

- Desk Top PC : Third Party supplied item
- Hardware : Pentium IV, 2.6 GHz, 256MB RAM, 40 GB HDD
- Operating System : Windows 2000 or above, XP
- Database : MS ACCESS 2000 or above
- Radio Modem : Customer preferred
- GSM/CDMA : Optional communication network in conjunction with the vehicle unit

ASL Advanced Systems Private Limited (ASL) has been engaged in the design and development of Global Positioning System (GPS) receivers and GPS based applications. Established in 1992, ASL has successfully developed and supplied thousands of GPS receivers, and provided solutions using GPS technology in the areas of Automatic Vehicle Tracking, Mining, Timing, Mapping, Navigation (Land, Air, and Marine) etc. and also DGPS reference station for navigation and accurate positioning applications in Military and Civil sectors

Due to continuous product development ASL Advanced Systems reserves right to amend or alter specifications without notice.

ASL/AMMA/MAY 2006/Rev 02

ASL ADVANCED SYSTEMS PRIVATE LIMITED

"PRAGATHI", 70/1 MILLER ROAD
BANGALORE - 560 052, INDIA.
Tel : +91 (80) 2225 8376, 2225 6342
Fax : +91 (80) 2220 3350
Email: contact@asladvancedsys.in
Website: www.asladvancedsys.in